

# 12. Du wirst stets mein Kind sein

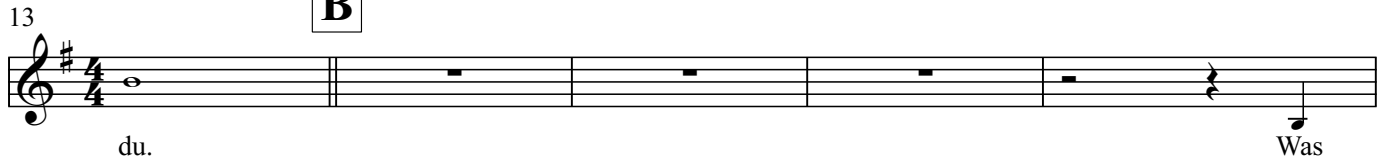
Text: Michael Kunze  
Musik: trad./Dieter Falk

**A**  $\text{♩} = 85$

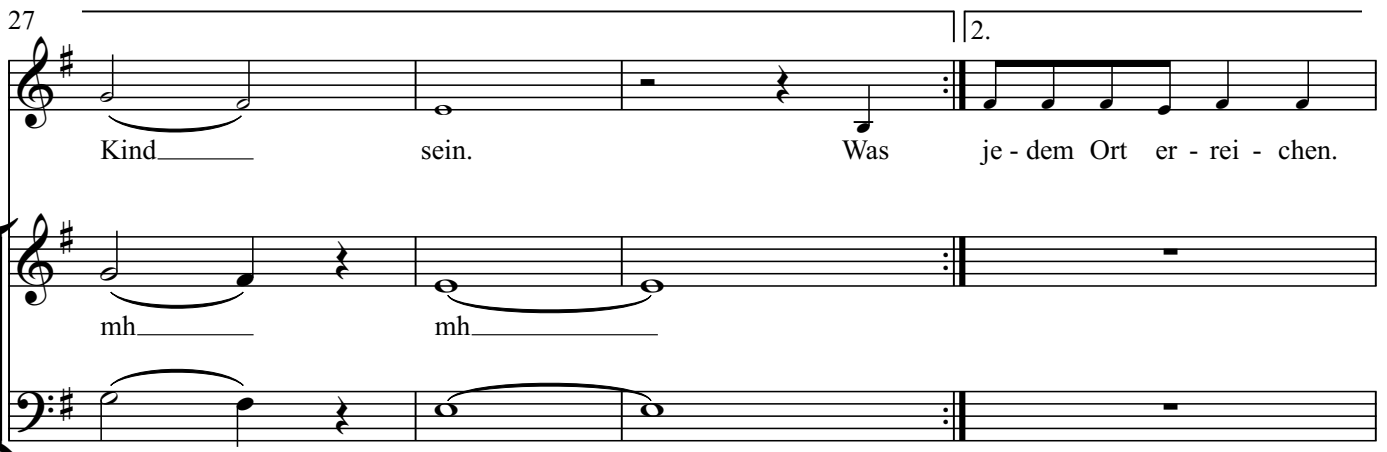
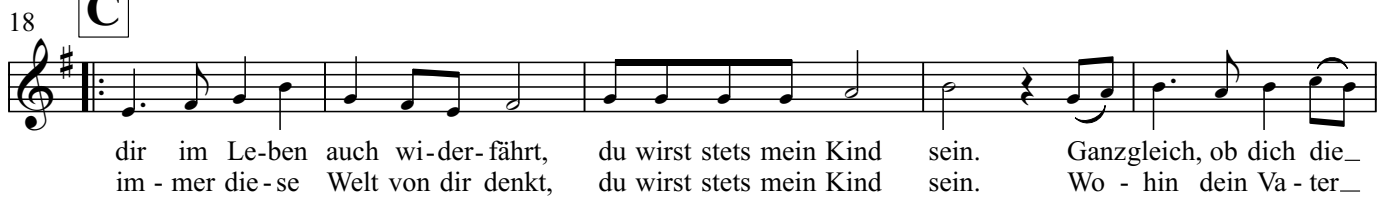
**Maria (sehr frei)**



**B**



**C**



31

Du wirst stets mein Kind sein.

*mf*

mh mh mh

35

**D**

Soll-te es in dei-nem Le-ben nicht nur Gold und Weih-rauch ge-ben, son-der-n Leid und Bit-ter-keit, wie die Myr-rhe pro-phe-zeit? Fügt die Welt dir Schmer-zen zu, fühl ich es wie

46

**E**

du. Auch, wenn du groß und wei-se bist, du wirst stets mein Kind sein. Ganz

**Chor**

Uh Uh Uh

51

gleich, ob du mich je ver-misst, und selbst dann, wenn ich dich nicht mehr ver-stehn kann:

Uh

55

Music score for measures 55-60. The vocal line (treble clef) has a key signature of one sharp (F#) and a common time signature. The lyrics are: "Du wirst stets mein Kind sein. Wie im - mer dich die an - dern sehn,". The piano accompaniment consists of two staves (treble and bass clef). The piano part for measure 55 includes a vocal line with a key signature of one sharp (F#) and a common time signature, and a piano line with a key signature of one sharp (F#) and a common time signature. The piano part for measure 56 includes a vocal line with a key signature of one sharp (F#) and a common time signature, and a piano line with a key signature of one sharp (F#) and a common time signature. The piano part for measure 57 includes a vocal line with a key signature of one sharp (F#) and a common time signature, and a piano line with a key signature of one sharp (F#) and a common time signature. The piano part for measure 58 includes a vocal line with a key signature of one sharp (F#) and a common time signature, and a piano line with a key signature of one sharp (F#) and a common time signature. The piano part for measure 59 includes a vocal line with a key signature of one sharp (F#) and a common time signature, and a piano line with a key signature of one sharp (F#) and a common time signature. The piano part for measure 60 includes a vocal line with a key signature of one sharp (F#) and a common time signature, and a piano line with a key signature of one sharp (F#) and a common time signature.

Uh

61

Music score for measures 61-65. The vocal line (treble clef) has a key signature of one sharp (F#) and a common time signature. The lyrics are: "du wirst stets mein Kind sein. Und musst du ein-mal von mir gehn, was ich fühl für dich, wird sich". The piano accompaniment consists of two staves (treble and bass clef). The piano part for measure 61 includes a vocal line with a key signature of one sharp (F#) and a common time signature, and a piano line with a key signature of one sharp (F#) and a common time signature. The piano part for measure 62 includes a vocal line with a key signature of one sharp (F#) and a common time signature, and a piano line with a key signature of one sharp (F#) and a common time signature. The piano part for measure 63 includes a vocal line with a key signature of one sharp (F#) and a common time signature, and a piano line with a key signature of one sharp (F#) and a common time signature. The piano part for measure 64 includes a vocal line with a key signature of one sharp (F#) and a common time signature, and a piano line with a key signature of one sharp (F#) and a common time signature. The piano part for measure 65 includes a vocal line with a key signature of one sharp (F#) and a common time signature, and a piano line with a key signature of one sharp (F#) and a common time signature.

66

Music score for measures 66-70. The vocal line (treble clef) has a key signature of one sharp (F#) and a common time signature. The lyrics are: "nie - mals än - dern. Du wirst stets mein Kind sein.". The piano accompaniment consists of two staves (treble and bass clef). The piano part for measure 66 includes a vocal line with a key signature of one sharp (F#) and a common time signature, and a piano line with a key signature of one sharp (F#) and a common time signature. The piano part for measure 67 includes a vocal line with a key signature of one sharp (F#) and a common time signature, and a piano line with a key signature of one sharp (F#) and a common time signature. The piano part for measure 68 includes a vocal line with a key signature of one sharp (F#) and a common time signature, and a piano line with a key signature of one sharp (F#) and a common time signature. The piano part for measure 69 includes a vocal line with a key signature of one sharp (F#) and a common time signature, and a piano line with a key signature of one sharp (F#) and a common time signature. The piano part for measure 70 includes a vocal line with a key signature of one sharp (F#) and a common time signature, and a piano line with a key signature of one sharp (F#) and a common time signature.

rit. . . . .